
Table of Contents

Overview	1
Installation	2
User Guide	3
Technical Info & Support	6

Overview

Auto Shutdown is compatible with most SBT, AccPac and Pro 7.1 - 7.6 accounting systems. This Sage add-on module from Data Developers Plus provides the accounting system administrator with tools to control specific time periods during which user sessions will be closed out and blocked from the accounting program. A shut down period can be used for scheduled maintenance routines or emergency repair sessions. In addition, Auto Shutdown can be configured to log out an "idle session" on a workstation. This feature serves as a security measure so that an abandoned workstation does not display or provide access to accounting data, information and reports by an unauthorized person.

Only a Pro Series administrator is allowed to log into the Auto Shutdown program to configure shut down periods and idle workstation time limits. A unique Shutdown administrator password is established when the Shutdown system is opened for the first time, as shown on page 2. Shutdown settings are only accessible to the shutdown administrator; an administrator's Pro Series user session is not closed out of the accounting program during scheduled or emergency shut down periods.

A scheduled shut down is typically timed for non-business hours. For example, a scheduled shut down period should be coincident with an off-time scheduled back up routine. Users who are logged in to the accounting system are notified of a scheduled shut down 3 hours in advance, then 2 hours, 1 hour, 45 minutes, 30 minutes, 15 min, 10, 5, 4, 3, 2, 1 before the system shuts down. This allows time to finish any routines that are running prior to the user session being closed out and before the back up routine begins.

Installation

If supplied as a Zip file:

Using Winzip, extract files to the root directory of Pro Series. Verify that the Winzip option "Use Folder Names" is turned on so that the files are extracted into the correct directories. See Technical Information at end of document to see a list of files for ShutDown.

If supplied with an installation executable:

Run the ShutDown...exe file by either double clicking on it or from the Start-Run menu. Follow the prompts to install ShutDown in the Pro Series directory.

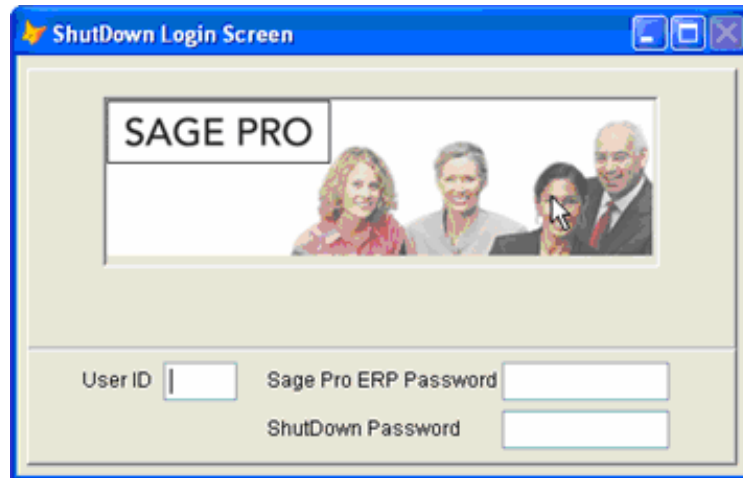
If you don't want the setup routine to automatically install the files into the Pro Series directory, you can simply answer No to the question "Do You Wish to Install the files now?" when Foxpro launches during the install. If you answer no, everything will be in a "SHUTDOWN" directory in the Pro Series directory you chose. When you are ready for the programs to be copied into the appropriate directories, run sdcopy.exe in the root of Pro. Again, you would only run the sdcopy.exe if you answered no to the install files question. A reason you would answer no to this question is if you wanted to view the programs the setup routine will be installing prior to copying them into your live Pro Series area.

Create a desktop shortcut icon for ShutDown:

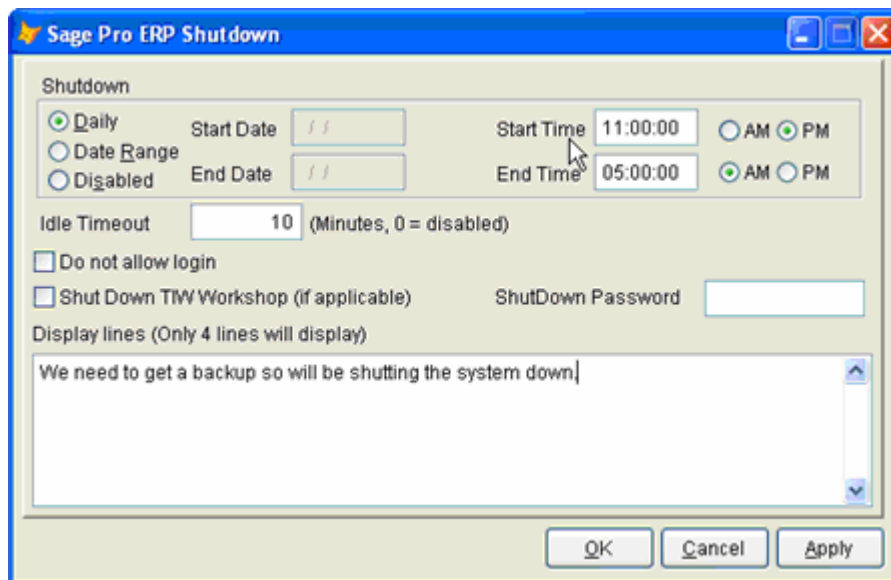
The executable to run ShutDown will be in the root of the directory of your installation: SHUTDOWN.EXE

Using Auto ShutDown

To display the Login Screen for the first time: double click the ShutDown icon on the desktop. A blank ShutDown Login Screen will be displayed:



Enter a Pro Series Administrator user ID and password. Leave the ShutDown Password blank the first time ShutDown is run. The ShutDown password will be entered in the second screen shown below. Press ENTER to open the set up screen:



Daily | Date Range | Disabled

A *Daily* ShutDown is used to close out all Pro Series users at a specific time each day for scheduled Pro backup or reindexing routines.

A *Date Range* can be set to close out all Pro Series users on specific days at specific times to implement system maintenance.

Disabled: this is used to clear all ShutDown settings. The record in shutdown.dbf is also cleared. Enter new settings to re-establish ShutDown routines.

Start Time | End Time

Start Time is the actual time that all users will be logged out of Pro Series. Access to Pro is blocked by ShutDown until the *End Time*.

Note: the start and end times are controlled by the date and time settings on each workstation. Verify that all workstations with access to Pro Series have identical date and time settings.

Idle Timeout

Idle Timeout will close Pro Series on a workstation session that has been idle for x number of minutes. This is a valuable security feature of ShutDown. A workstation with confidential information on display or in the desktop tray will be logged out of Pro Series after the specified interval of idle time, for example, 10 minutes. This prevents non-authorized personnel from having access to proprietary corporate data and information.

Do Not Allow Login

This check box is used to block all users from access to the Pro Series system. This toggle does not clear current user sessions but prevents others from logging in to Pro. Users with current sessions who log out after this toggle is turned on will be blocked from access until this setting is turned off by the ShutDown administrator. See additional instructions for the ShutDown administrator at the bottom of page 4. Some scenarios in which the "Do Not Allow Login" setting would be implemented:

- A. A corrupted file is discovered in Pro. This setting prevents new user sessions from logging in while the ShutDown administrator enters a Start Time | End Time a few minutes into the future to log out current user sessions. "Do not allow login" is turned off when the problem is resolved.
 - B. There may be circumstances when only a selected group of Pro users should have access to the accounting system. The *Do Not Allow Login* utility is turned on after the designated users are logged in to block access by other users.
- Do Not Allow Login* can be turned on when there is a need to keep users out of Pro for an unscheduled period of time, such as a weekend, to do system maintenance, etc. Access is automatically blocked as users log out of Pro; access remains blocked until the ShutDown administrator unchecks this setting.
-

Auto ShutDown for TIW Workshop (linked to Pro Series)

A separate Auto ShutDown module is available for Pro Series systems with a TIW Workshop link. Contact your reseller or DDP for more information.

ShutDown Password

Auto ShutDown can only be accessed by using the password that was assigned in the set up screen as displayed on page 2.

Display Lines

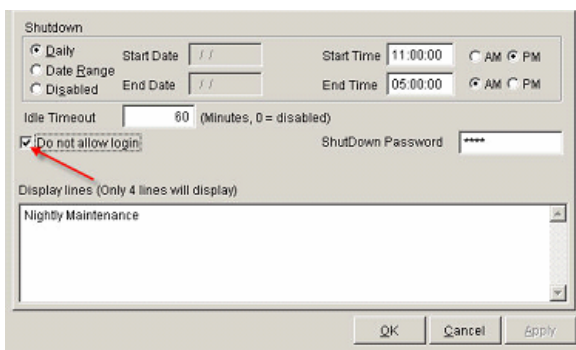
A message can be entered in ShutDown to advise logged in users when and why their Pro Series sessions will close. The message will be displayed to the users with each warning that they receive about the system shutting down at xx:xx:xx time.

Notes

All Pro Series transactions will be finished before a user session is logged out by ShutDown. For example, a user is shipping an order; the shipping routine will be completed before ShutDown closes that user's Pro Series session.

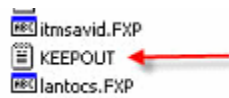
Auto ShutDown is designed to prepare users with current Pro Series sessions of a pending shut down routine so that tasks can be concluded on a timely basis. The warning message first appears three hours prior to a scheduled shut down or immediately if an unscheduled shut down is implemented for some unforeseen circumstance in less than three hours. Starting with a three hour countdown ShutDown will post screen reminders again at 2 hours, then 1 hour, 45 minutes, 30 minutes, 15 min, 10, 5, 4, 3, 2, 1 as a countdown to closing the user session. If a shut down is to occur in less than three hours Auto ShutDown will post time appropriate warnings, according to the same sequence.

Do Not Allow Login - ShutDown Administrator Access Procedure



“Do Not Allow Login” feature should be turned while the administrator is logged in to Pro Series. Access to Pro will be denied to the administrator in the event that the administrator's Pro user session is terminated after this toggle is set.

KEEPOUT.txt is created in the Pro root directory when “Do not allow login” is turned on. This file must be deleted from the directory before the Administrator can log back in to Pro. If necessary, the “Do Not Allow Login” toggle can be turned back on once the administrator is logged back in to Pro.



Technical Information

ShutDown Modifies the following Pro Series files:

In Pro 5, Pro 6 and Pro 6.5 Versions:
SBTLIB.VCX/VCT

In Pro 7.1 and above:
SYLOGN.VCX/VCT

ShutDown Files

SHUTDOWN.EXE	Executable to set up ShutDown
SHUTDOWN.PRG/FXP	Main ShutDown Program to reside in root of Pro
SHUTDOWN.SCX/SCT/H	ShutDown Login Screen to reside in root of Pro
SHUTDOWN1.SCX/SCT	Shutdown Maintenance Screen to reside in root of Pro
SHUTDOWN.VCX/VCT	Holds ShutDown Timer to reside in root of Pro

SBTLIB.VCX/VCT (Pro 5 through 6.5) to reside in root of Pro

SYLOGN.VCX/VCT (Pro 7.1 and above) to reside in SM directory

Support

702-487-9711 x 303

support@ddpcorp.com

See our website for other Sage Pro Series add on workflow solutions
www.ddpcorp.com



"Productivity Software Tools For Your Business"

Sage Pro Series is a registered trademark of Sage Software Corp.

Product specifications, availability and price are subject to change without notice.